

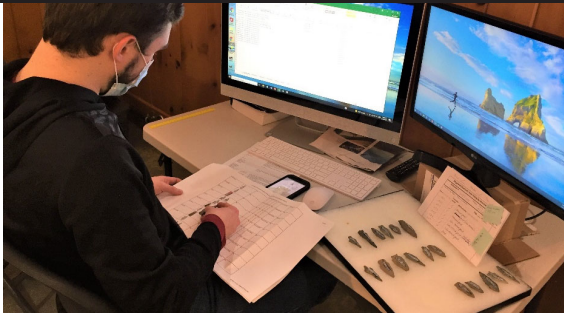


The Lenape and Their Ancestors in Hopewell Valley

Wednesday, December 7, 2022
7:00 pm

Presented by Ian Burrow, Ph. D., RPA

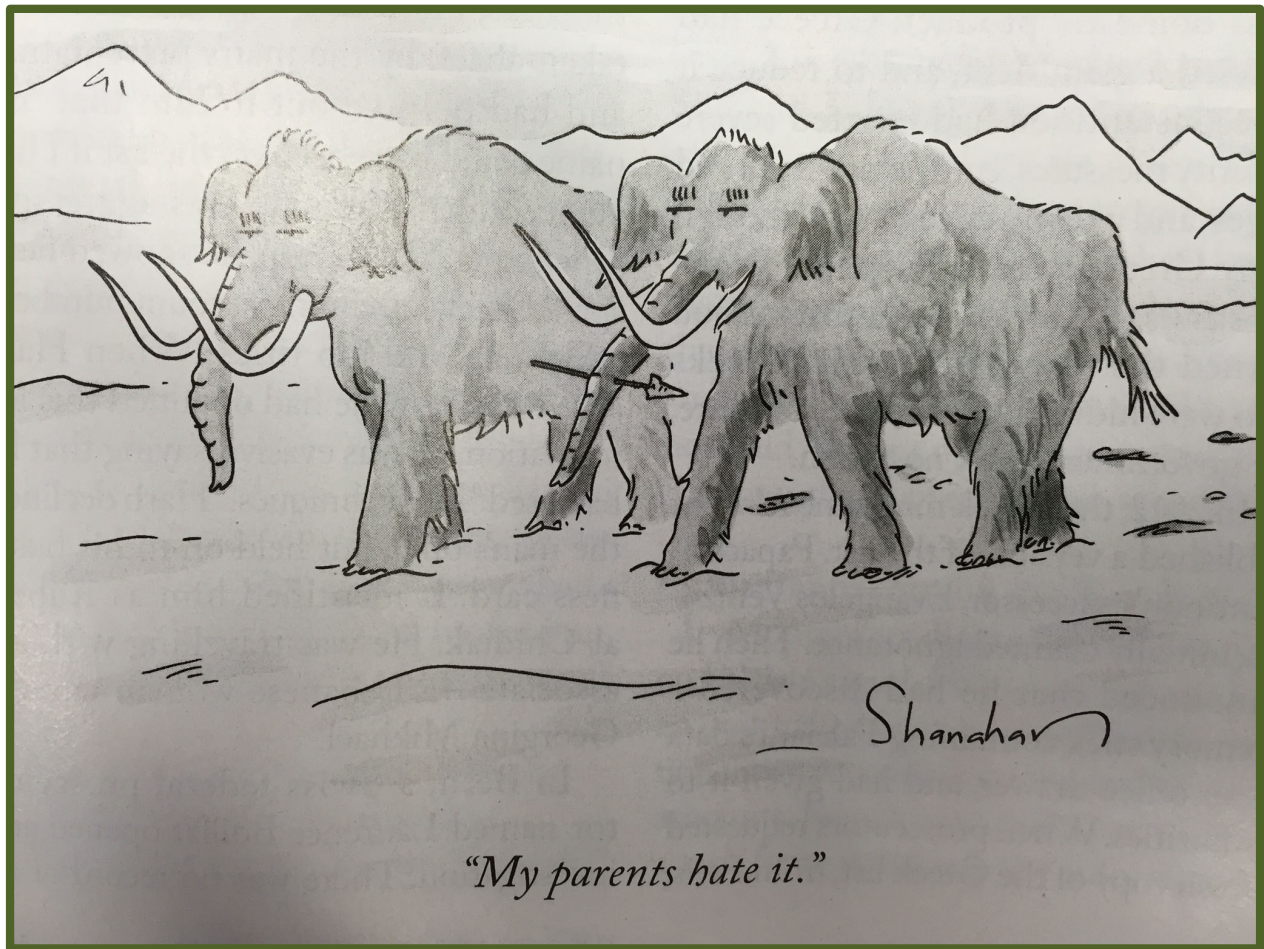
In person at the Hopewell Theater:
5 South Greenwood, Hopewell, NJ
Or online virtual presentation via Zoom*



THE OLDEST ARTIFACTS IN THE
MUSEUM:

“DALTON”-STYLE POINTS
ABOUT 9000 YEARS OLD



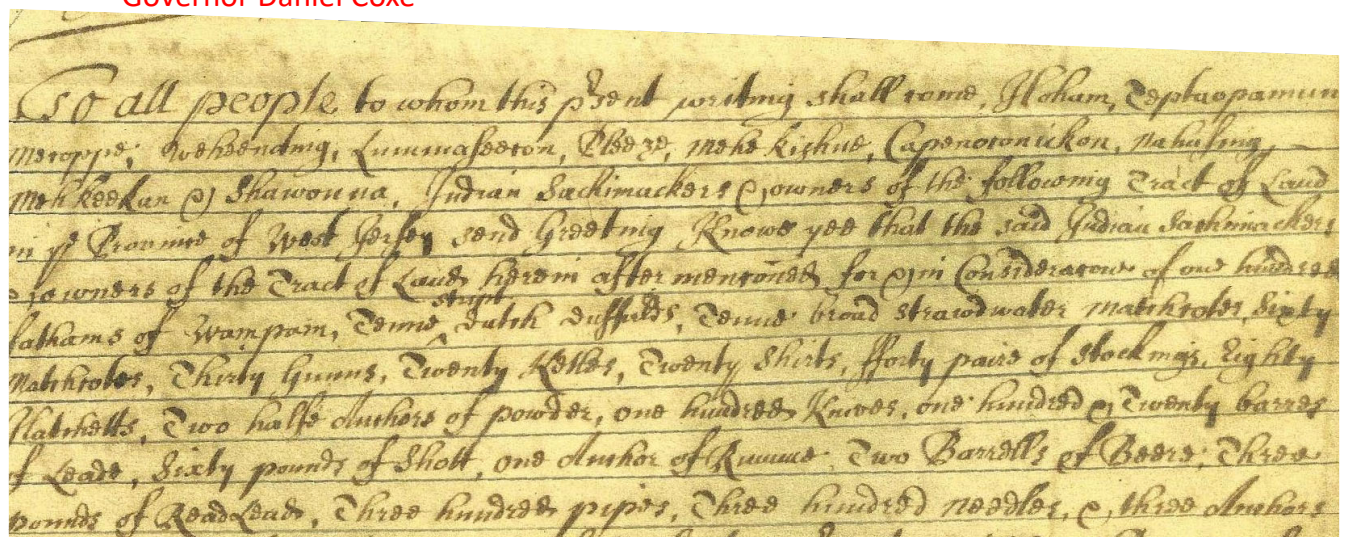
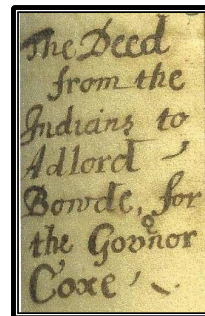


WITH THE STROKE OF A PEN, THINGS CHANGE FOREVER.....

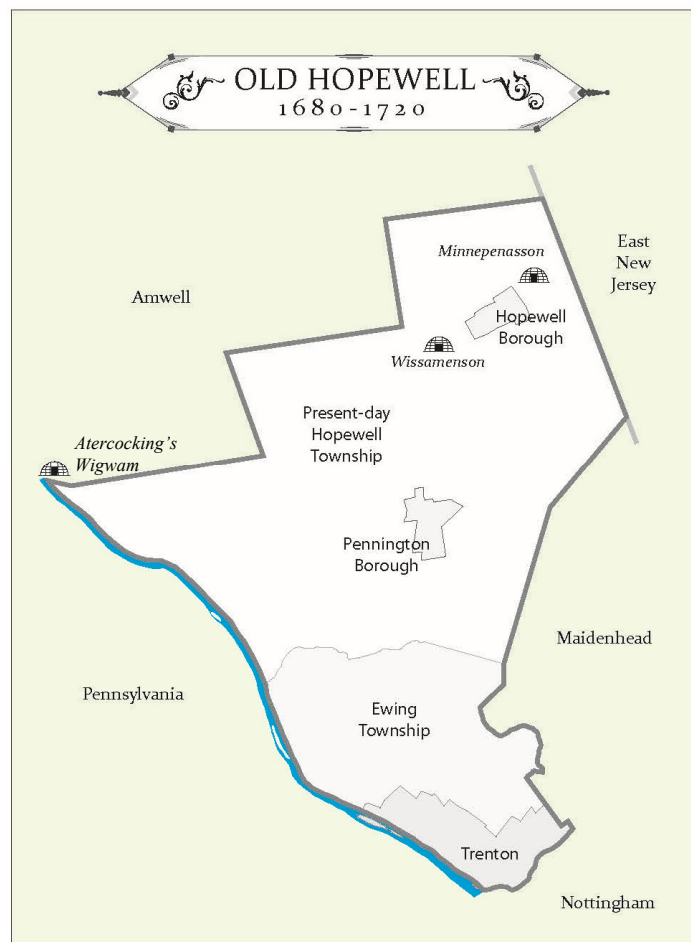
When: 30th March 1688

Where: Probably Burlington City, Capital of the Province of West Jersey

What: A deed transferring ownership of modern Hopewell, Ewing and parts of Trenton from "The Indians" to Adlord Bowde for Governor Daniel Coxe

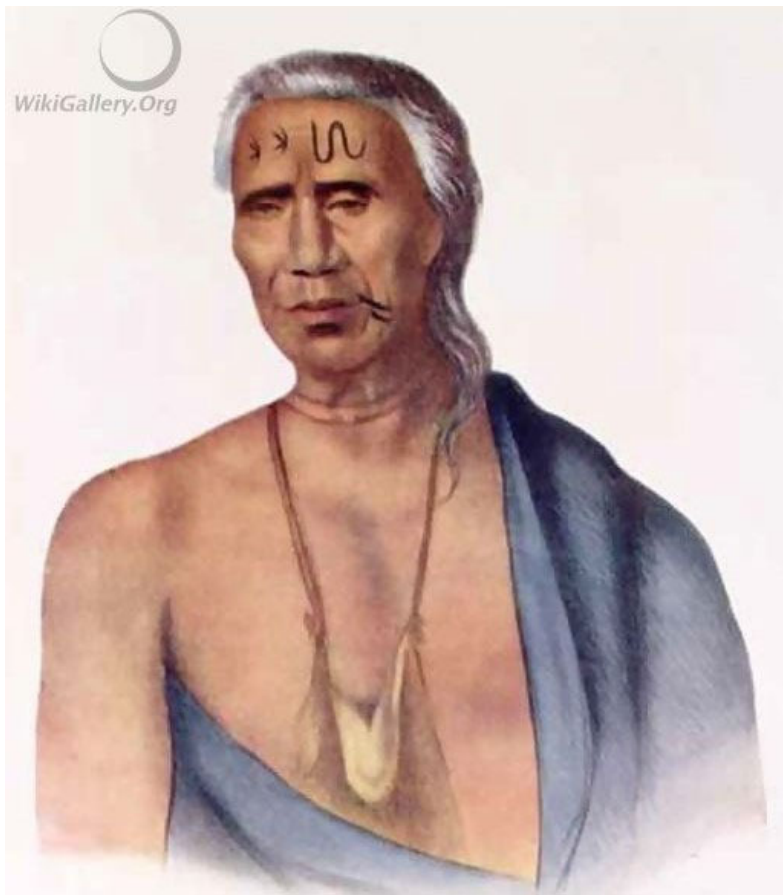


WHAT DANIEL COXE BOUGHT IN 1688



The Sachimackers Who Signed the 1688 Deed transferring Hopewell Valley from the Lenape to Daniel Coxe

Hoham
Teptaopamun
Mecoppe
Weweenoting
Lummaseecon
Pleeze
Mehekissue
Capenokonickon
Nehusing
Nehkeekan
Shawonna



**Lappawinsoe:
Lenape Leader
and signer of
the 1737
“Walking
Purchase”
Treaty**

**By Gustav
Hesselius c.
1735**

**CONSIDERATION FOR THE SALE OF HOPEWELL LAND TO DANIEL COXE,
MARCH 30 1688**

one hundred fathoms of wampum (worth about 25 pounds sterling)

Tenne stript Dutch duffelds,

Tenne broad stroudwater matchcotes

Sixty matchcotes

thirty guns

twenty kettles

twenty shirts

fforty paire of stockings,

Eighty Hatchetts

Two half anchors of powder

one hundred knives

one hundred and twenty barres of lead

sixty pounds of shott

one anchor of rumme (about 10 gallons)

two barrells of beere

three pounds of Read Lead,

three hundred pipes,

three hundred needles,

three anchors of tobacco

20 Kettles



70 matchcotes (including 10 "Stroudwater")

80 hatchets



30 guns



300 pipes



3 pounds of Red Lead

20 Shirts



100 fathoms of wampum



RECONSTRUCTION OF A WIGWAM SIMILAR TO THOSE USED BY THE LENAPE INDIANS OF THE HOPEWELL AREA.

IT HAS A WOODEN FRAMEWORK COVERED WITH TREE BARK AND REEDS.

THIS EXAMPLE IS AT ST MARY'S CITY, MARYLAND

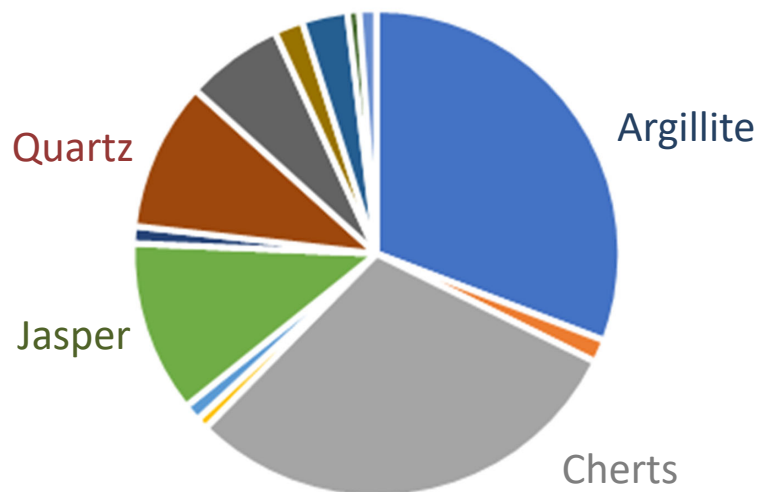


HOPEWELL MUSEUM AMERICAN INDIAN COLLECTION: BY THE NUMBERS

- 1886 ITEMS CATALOGED
- OF WHICH 1242 ARE "PROJECTILE POINTS" (ARROWS, SPEARS, DARTS)
- 51 DIFFERENT TYPES OF PROJECTILE POINTS IDENTIFIED
- DATE RANGE: 9000-300 YEARS AGO
- OTHER ARTIFACTS INCLUDE:
 - 62 STONE AXES
 - 42 HAMMERSTONES
 - 16 HOE BLADES
 - 9 SPEAR-THROWER "ATLATL" WEIGHTS
 - 8 BOLA STONES
 - 8 PENDANTS AND GORGETS
 - KNIVES
 - SCRAPERS
 - ADZES
 - PESTLES, MORTARS AND OTHER GRINDING TOOLS
 - CERAMICS

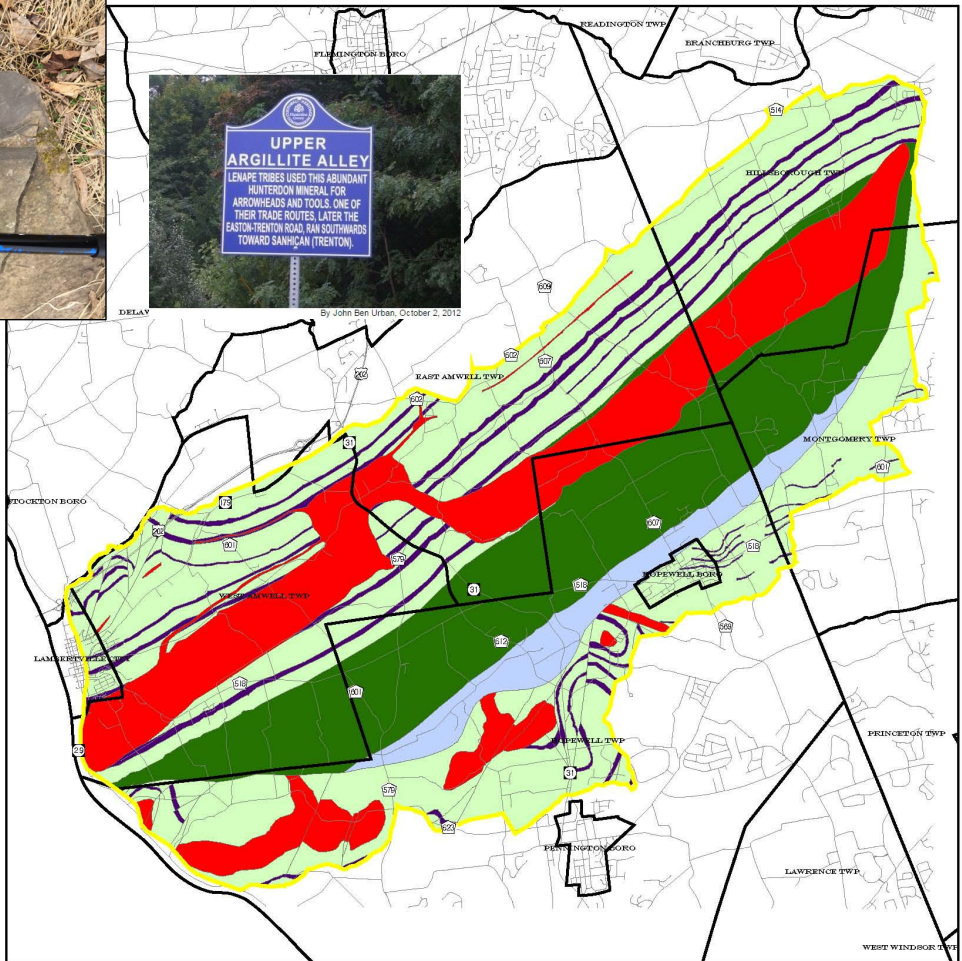
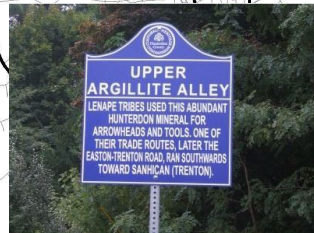
Collection,	Object ID,	Object Name,	Other Name	Material (Custom 2)	Period (Custom 3)	Dimensions L (cm)	Dimensions W (cm)	Dimensions H (cm)
Abbot Farm, Hopewell Twp	1937.001.001	Projectile Point	Lackawaxen	Argillite	Late Archaic	5.8	1.7	0.6
Abbot Farm, Hopewell Twp	1937.001.002	Projectile Point	Orient Fishtail	Argillite	Early Woodland	4.3	1.8	0.9
Abbot Farm, Hopewell Twp	1937.001.003	Projectile Point	Rossville	Argillite	Early Woodland	6.3	2.2	0.8
Abbot Farm, Hopewell Twp	1937.001.004	Projectile Point	Orient Fishtail	Argillite	Early Woodland	4.5	1.6	0.9
Abbot Farm, Hopewell Twp	1937.001.005	Projectile Point	Orient Fishtail	Argillite	Early Woodland	4.7	1.8	0.7
Abbot Farm, Hopewell Twp	1937.001.006	Projectile Point	Bare Island	Argillite	Late Archaic	5.4	3.0	0.9
Abbot Farm, Hopewell Twp	1937.001.007	Projectile Point	Fox Creek	Quartzite	Late Archaic-Early Woodland	7.0	2.6	0.9
Abbot Farm, Hopewell Twp	1937.001.008	Projectile Point	Bare Island	Argillite	Late Archaic	4.5	1.9	0.9
Abbot Farm, Hopewell Twp	1937.001.009	Projectile Point	Orient Fishtail	Argillite	Early Woodland	5.4	2.3	0.5
Abbot Farm, Hopewell Twp	1937.001.010	Projectile Point	Bare Island	Argillite	Late Archaic	4.7	1.8	0.7
Abbot Farm, Hopewell Twp	1937.001.011	Projectile Point	Lackawaxen	Quartzite	Late Archaic	6.7	1.9	1.0
Abbot Farm, Hopewell Twp	1937.001.012	Projectile Point	Bare Island	Argillite	Late Archaic	4.8	1.9	0.8
Abbot Farm, Hopewell Twp	1937.001.013	Projectile Point	Bare Island	Argillite	Middle Archaic	4.9	2.3	0.9
Abbot Farm, Hopewell Twp	1937.001.014	Projectile Point	Bare Island	Argillite	Late Archaic	5.0	1.8	0.6
Abbot Farm, Hopewell Twp	1937.001.015	Projectile Point	Lackawaxen	Argillite	Late Archaic	5.6	2.3	0.8
Abbot Farm, Hopewell Twp	1937.001.016	Projectile Point	Normanskill/Vosburg?	Argillite	Late Archaic	5.2	2.5	1.0
Abbot Farm, Hopewell Twp	1937.001.017	Projectile Point	Susquehanna	Argillite	Terminal Archaic	5.8	2.3	0.8
Abbot Farm, Hopewell Twp	1937.001.018	Projectile Point	Poplar Island	Argillite	Late Archaic-Terminal Archaic	5.7	1.5	0.4
David Hill (Calif)	1966.159g.001	Weaving	Basket	Grass?	Contact	27.0	6.0	27.0
David Hill (Calif)	1966.217.001	Weaving	mat	wool	contact	19.1	36.4	0.3
David Hill (Calif)	1966.219.001	Weaving	mat	wool	contact	24.5	23.2	0.3
David Hill (Calif)	1966.219.002	Weaving	mat	wool	contact	23.2	23.8	0.3
David Hill (Calif)	1966.219.003	Weaving	mat	wool	contact	23.4	24.0	0.3
David Hill (Calif)	1966.219.004	Weaving	mat	wool	contact	23.4	23.1	0.3
Sarah D. Stout Collection	1971.003.001	Cobble Tool	Netsinker/bola stone	Sandstone		6.7	6.7	1.3
Sarah D. Stout Collection	1971.003.002	Projectile Point	Genesee	Jasper	Late Archaic	6.1	5.1	1.2
Sarah D. Stout Collection	1971.003.003	Bifacial Tool	Petalas Blade	Argillite	Middle Woodland	5.3	3.3	1.0
Sarah D. Stout Collection	1971.003.004	Projectile Point	Cresap	Chert	Early Woodland	5.3	2.7	0.7
Sarah D. Stout Collection	1971.003.005	Projectile Point	Bare Island	Quartzite	Late Archaic	6.0	2.5	1.2
Sarah D. Stout Collection	1971.003.006	Unmodified stone	Game Stone	Sandstone		4.0	3.4	1.0
Sarah D. Stout Collection	1971.003.007	Cobble Tool	Smoothing stone/"slip stone"	Argillite		9.6	2.8	1.4

Stone Raw Materials %



- Argillite
- Basalt
- Cherts
- Flint
- Granite
- Jasper
- Obsidian
- Quartz
- Quartzite
- Rhyolite
- Sandstone
- Slate
- Steatite

SOURCES OF STONE
TYPES USED FOR
TOOLS IN
LENAPEHOCKING
(Kraft 2001 Fig 2.12)

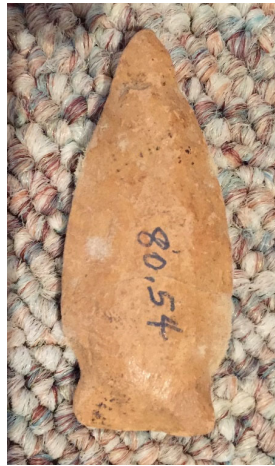


Legend

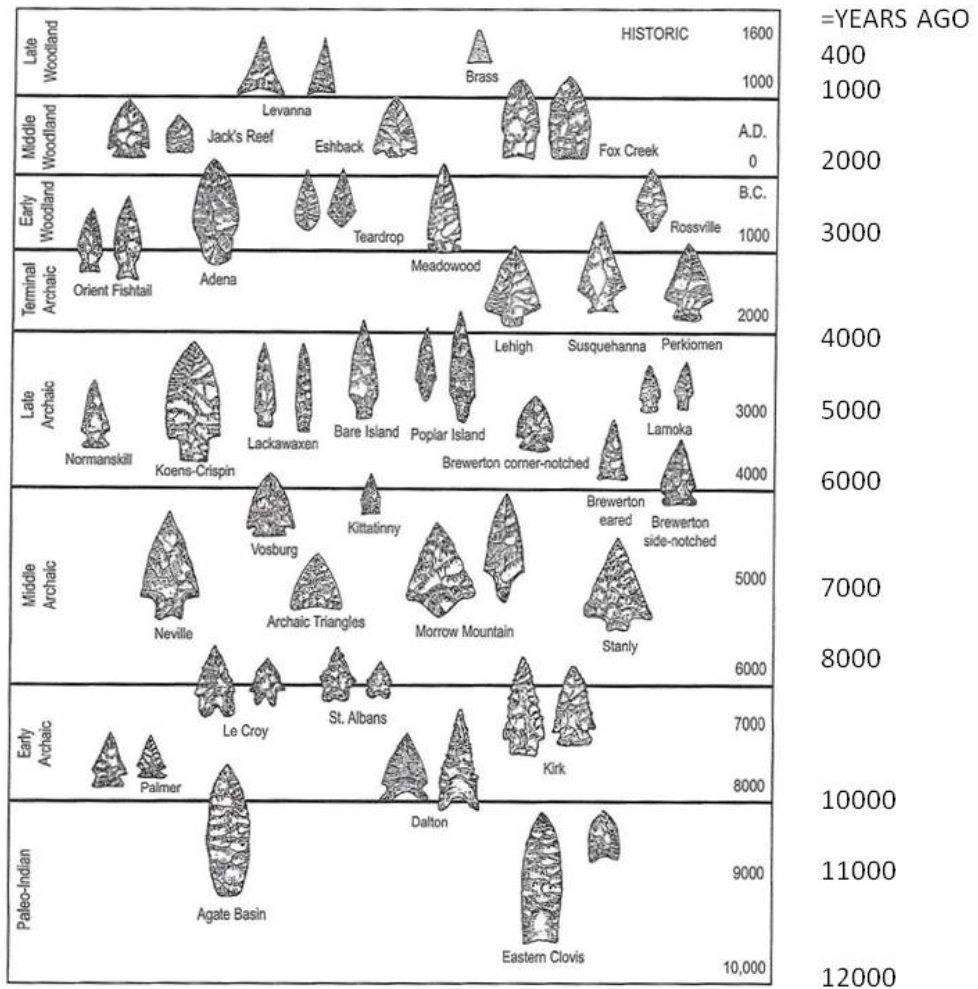
- Jurassic Diabase
- Lockatong Formation
- Passaic Formation
- Passaic Formation Gray bed
- Stockton Formation

The map was developed using New Jersey Department of Environmental Protection Geographic Information System capabilities, but the user's product has not been NJDEP verified and is not State-authorized.

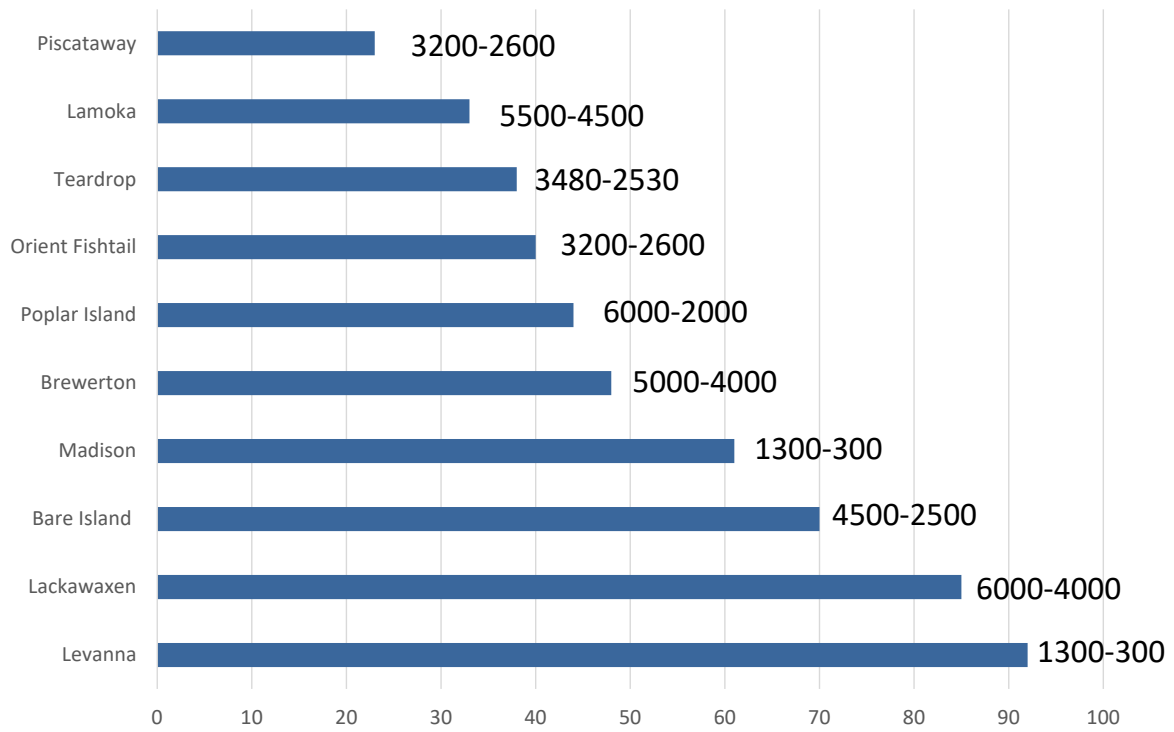
Data Sources:
"Bedrock Geology and Topographic Base Maps of NJ",
© 1998, © 2001, © 2004 - New Jersey Geological Survey,
Source Data Scale = 1:100,000



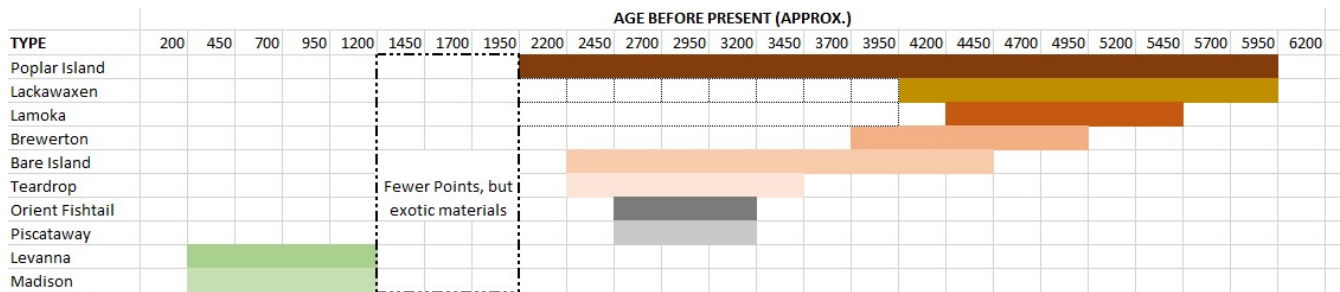
GREAT
VARIETY OF
PROJECTILE
POINTS.
WHY?



HOPEWELL MUSEUM'S "TOP 10" PROJECTILE POINTS, WITH AGES BEFORE PRESENT



AGE RANGES OF THE HOPEWELL "TOP 10" PROJECTILE POINTS, AND THE MIDDLE WOODLAND PERIOD "ANOMALY"

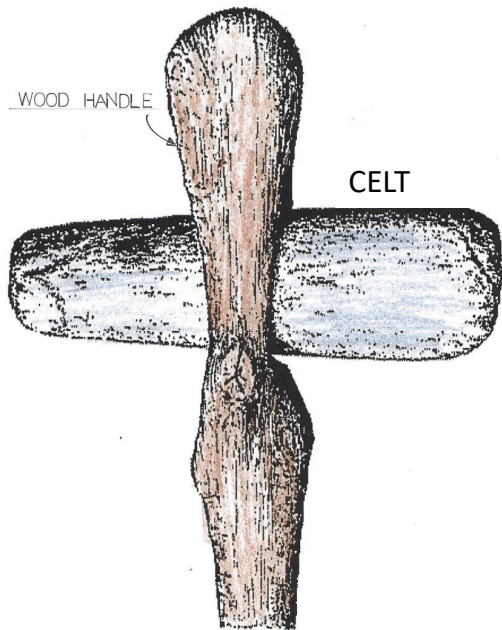




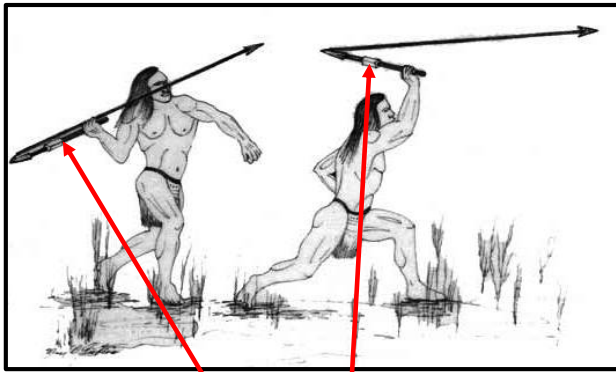


TWO "FULL-GROOVED"
STONE AXES
FROM
SOURLAND
MOUNTAIN.
ABOUT 5000
YEARS OLD

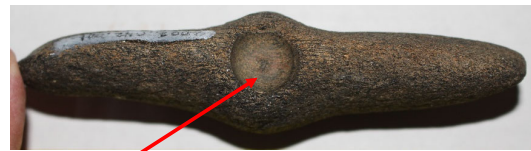




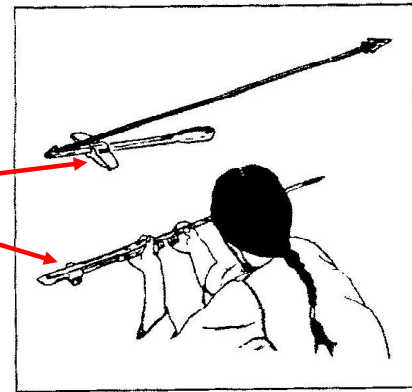
GROOVED AXE



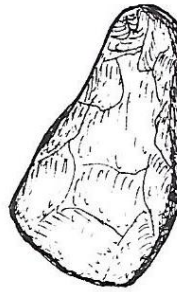
ATLATLS OR SPEAR-THROWERS:
LONG RANGE MISSILE SYSTEM OF
THE ARCHAIC PERIOD



Uncompleted centrum hole drilled with
hollow reed and sand





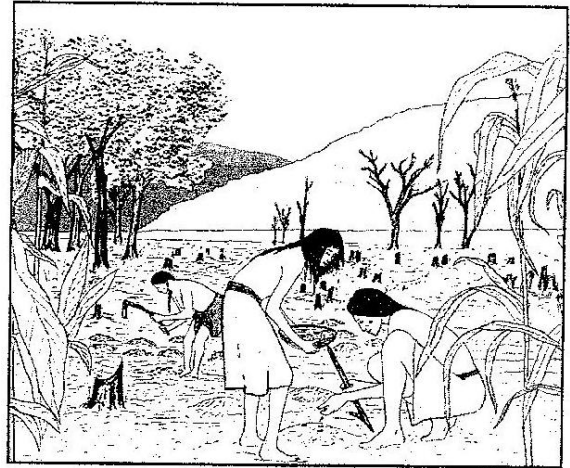


hoe

Garden Agriculture from about 1000 years ago:

Maize, Beans and Squash:
“the three sisters”

Men clear the land. Women
plant and tend the crops



EMERGING EVIDENCE FOR AMERICAN INDIAN RITUAL LANDSCAPES IN NEW ENGLAND AND THE MID-ATLANTIC

CAIRNS AND PLATFORMS AT OLEY HILLS, BERKS COUNTY, PENNSYLVANIA



Figure 10.9. Flat-topped Cairn B from east.



Figure 10.10. Platform B from north.



Figure 10.11. Inclined Cairn from south.

A STRANGE LANDSCAPE: THE DIABASE UPLANDS



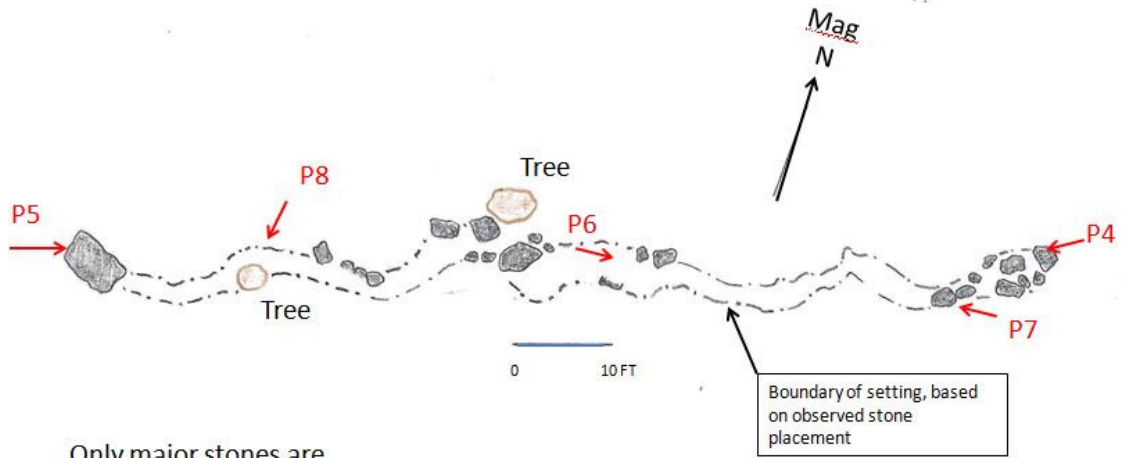
Courtesy of Jane Bellis Duffy

54. Three women sitting atop Three Brothers rock formation ca. 1900, Rileyville Rd, East Amwell Twp.





POSSIBLE "SERPENTINE" STONE SETTING, SOURLAND MOUNTAIN,
NEW JERSEY



Only major stones are shown: see Photos P4 through P8 for more detail

IB, PL 11/8/19