



HOPEWELL VALLEY
HISTORICAL SOCIETY

Calendar

1986



The Lanning Wheelwright shop on South Main Street Pennington, started by George Lanning, operated here from about 1825 until around the turn of the century.



JANUARY

1986

SUNDAY

MONDAY

TUESDAY

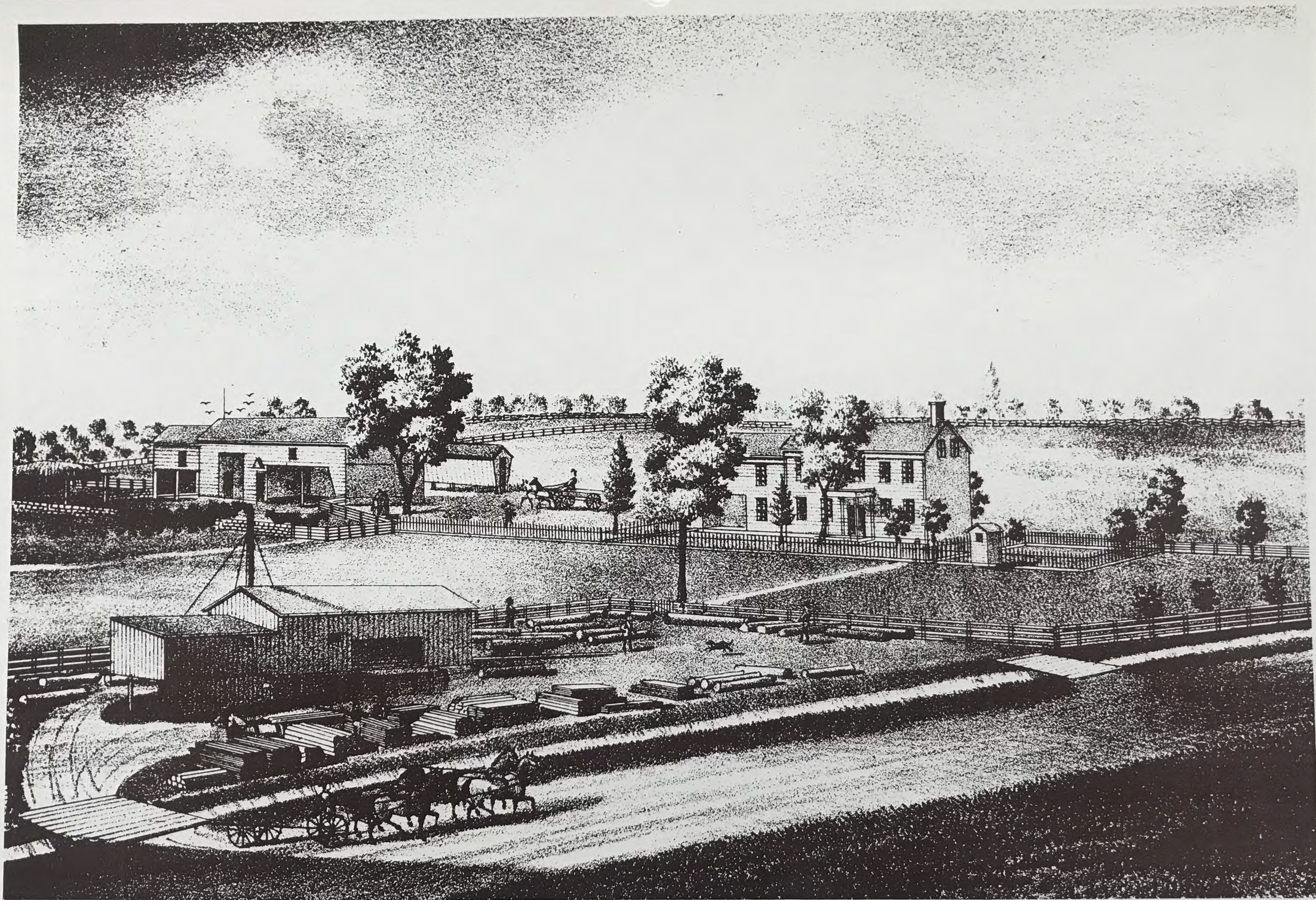
WEDNESDAY

THURSDAY

FRIDAY

SATURDAY

--	--	--	--	--	--	--



The homestead of B.H. Kise "farmer and dealer in hard lumber" in 1875, was located on the Rileyville Road north of Hopewell.



FEBRUARY

1986

SUNDAY

MONDAY

TUESDAY

WEDNESDAY

THURSDAY

FRIDAY

SATURDAY



This photo circa 1911 of the Hopewell Fire Company's first chemical fire engine was taken on Seminary Avenue in front of what was then the firehouse.



MARCH

1986

SUNDAY

MONDAY

TUESDAY

WEDNESDAY

THURSDAY

FRIDAY

SATURDAY

--	--	--	--	--	--	--	--



This photo of Reed's Mill, located outside of Pennington along Stony Brook around the turn of the century, is looking northeast.



APRIL

1986

SUNDAY

MONDAY

TUESDAY

WEDNESDAY

THURSDAY

FRIDAY

SATURDAY



Painting by unknown artist, of covered bridge in Washington Crossing, which was destroyed by a flood in 1903.



MAY

1986

SUNDAY

MONDAY

TUESDAY

WEDNESDAY

THURSDAY

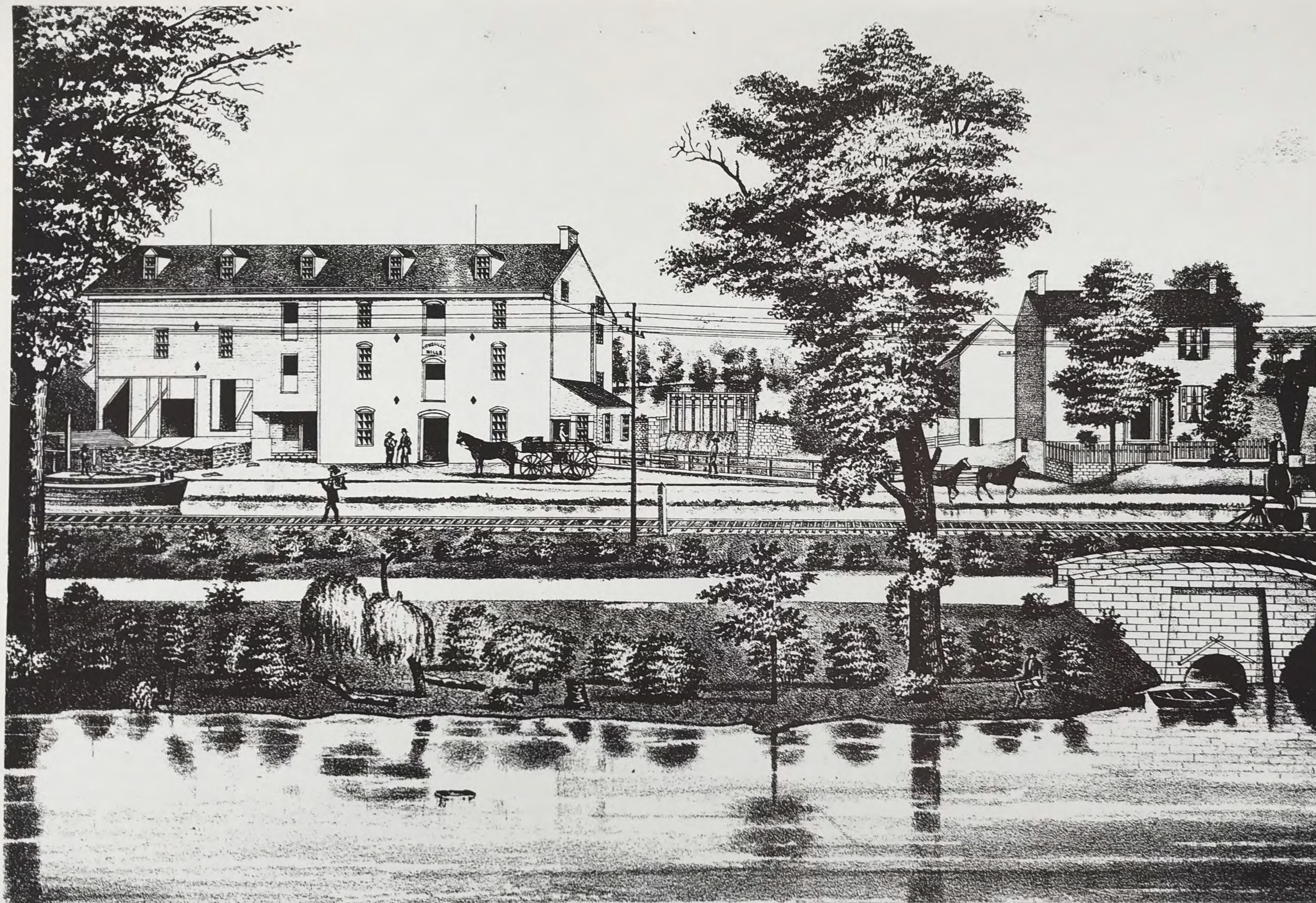
FRIDAY

SATURDAY

1

2

3



The Flouring and Saw Mills of Agnew & Snook in 1875 were located along the canal in Titusville just north of Church Road.



JUNE

1986

SUNDAY

MONDAY

TUESDAY

WEDNESDAY

THURSDAY

FRIDAY

SATURDAY

1

2

3

4

5

6

7



Summer pleasures "down at Stony Brook" was taken by George Frisbie in 1899.



JULY

1986

SUNDAY

MONDAY

TUESDAY

WEDNESDAY

THURSDAY

FRIDAY

SATURDAY



The Hopewell Baseball Team captured by an unknown photographer in 1902.



AUGUST

1986

SUNDAY

MONDAY

TUESDAY

WEDNESDAY

THURSDAY

FRIDAY

SATURDAY

1

2



Titled "Sunday Afternoon Outing Near the Twinbridges," this was the last of the two bridges built in 1886, over Stony Brook outside Pennington.



SEPTEMBER

1986

SUNDAY

MONDAY

TUESDAY

WEDNESDAY

THURSDAY

FRIDAY

SATURDAY

	1	2	3	4	5	6
--	---	---	---	---	---	---



The delivery fleet of Allen's Bakery, located on the corner of East Broad Street and Seminary Avenue.



OCTOBER

1986

SUNDAY

MONDAY

TUESDAY

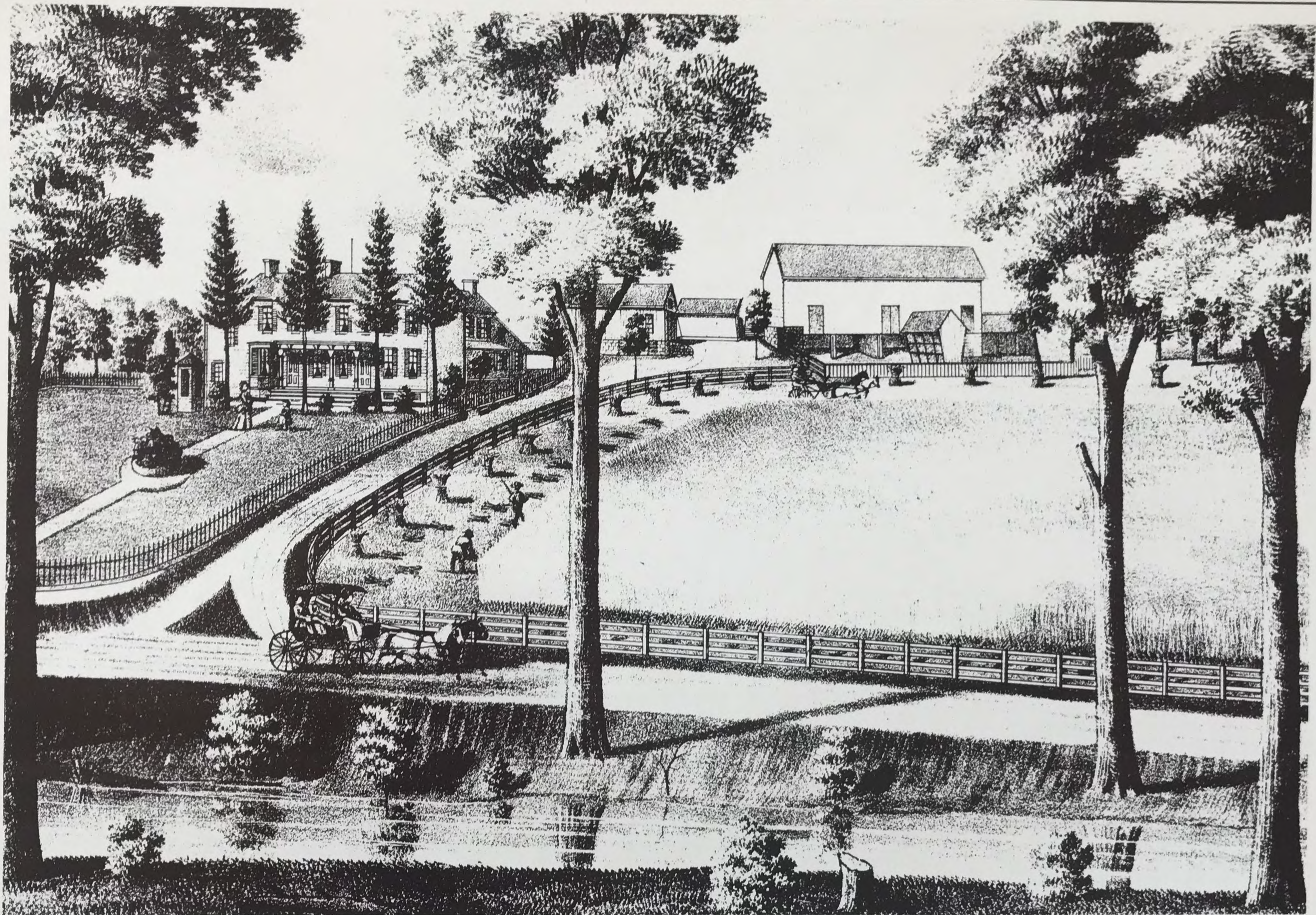
WEDNESDAY

THURSDAY

FRIDAY

SATURDAY

--	--	--	--	--	--	--	--



This lithographic view shows the homestead of Andrew and Ralph Ege in 1875. This farm was located on Stony Brook Road.



NOVEMBER

1986

SUNDAY

MONDAY

TUESDAY

WEDNESDAY

THURSDAY

FRIDAY

SATURDAY

--	--	--	--	--	--	--



The Stony Brook Lodge on East Delaware Pennington, was built in 1895 by Colonel John A. Kunkel, influential businessman and developer.



DECEMBER

1986

SUNDAY

MONDAY

TUESDAY

WEDNESDAY

THURSDAY

FRIDAY

SATURDAY

	1	2	3	4	5	6
--	---	---	---	---	---	---

THE PHOTOGRAPHS USED IN THIS CALENDAR
ARE FROM THE FOLLOWING SOURCES.

THE GEORGE H. FRISBIE COLLECTION
THE COLLECTION OF CHRISTOPHER BANNISTER
THE HOPEWELL MUSEUM COLLECTION
EVERTS AND STEWART HISTORICAL ATLAS OF MERCER COUNTY, N.J. 1875

OFFICERS 1986

Betty Hirschmann, President
Martha Logan, 1st Vice-President
Jean Koeppel, 2nd Vice-President
Jerry Farina, Secretary
Pam Cain, Treasurer

BOARD OF TRUSTEES 1986

Fred Cain
Tina Campbell
Phyllis D'Autrechy
Betty Davis
Josie Dellenbough
John Grant
Peter Maurer
Carol Mezzaros
Caroline Woodward

STANDING COMMITTEE CHAIRMEN

Penny Branham - Hospitality
Dee Wilson - Membership
Betty Davis - Phone Squad
Betts Dippel - Publicity
Jack Koeppel - Special Projects