



**HOPEWELL VALLEY
HISTORICAL SOCIETY**
Calendar
1987



Completed in 1882, the Hopewell Station is a fine example of Second Empire architecture. This circa 1890 view shows the center of much of the borough's activity.



JANUARY

1987

SUNDAY

MONDAY

TUESDAY

WEDNESDAY

THURSDAY

FRIDAY

SATURDAY

				1	2	3
--	--	--	--	---	---	---



*A swing bridge crossed the Delaware and Raritan Canal Feeder at Washington Crossing.
This circa 1900 view is looking south.*



FEBRUARY

1987

SUNDAY

MONDAY

TUESDAY

WEDNESDAY

THURSDAY

FRIDAY

SATURDAY



The W.L. Berrien Ice Cream Parlor was located on the east side of North Main Street at Delaware Avenue. Originally part of the Irving House this structure was torn down in 1926.



MARCH

1987

SUNDAY

MONDAY

TUESDAY

WEDNESDAY

THURSDAY

FRIDAY

SATURDAY



The Mountain House at Woodsville was built in 1854.
Located on an important 19th century stagecoach route, it was a stopping point for many a weary traveler.



APRIL

1987

SUNDAY

MONDAY

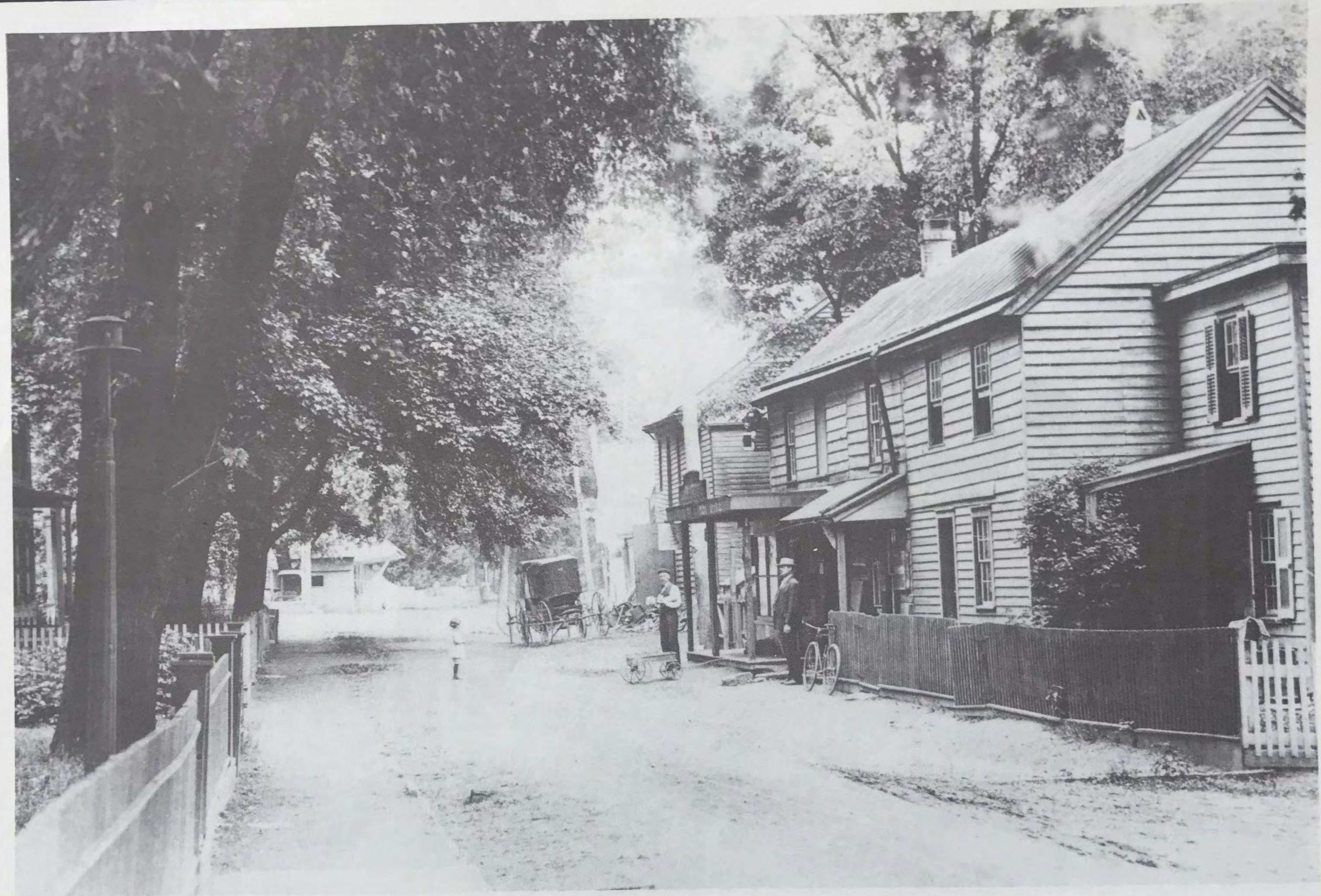
TUESDAY

WEDNESDAY

THURSDAY

FRIDAY

SATURDAY



This street scene is at the north end of River Drive in Titusville.
This circa 1915 photo looks south to the Church Road intersection.



MAY

1987

SUNDAY

MONDAY

TUESDAY

WEDNESDAY

THURSDAY

FRIDAY

SATURDAY

--	--	--	--	--	--	--	--



This Broad Street establishment served the local farmers many needs in old Hopewell. Mr. McPherson offered general merchandise as well as postal services while recommending the use of Birk's Magnetic Oil for rheumatism and pain.



JUNE

1987

SUNDAY

MONDAY

TUESDAY

WEDNESDAY

THURSDAY

FRIDAY

SATURDAY



Looking north, this intersection of Delaware Avenue and North Main Street was known as Blackwell's Corner. The electric trolley shown here connected downtown Trenton with Pennington and Hopewell.



JULY

1987

SUNDAY

MONDAY

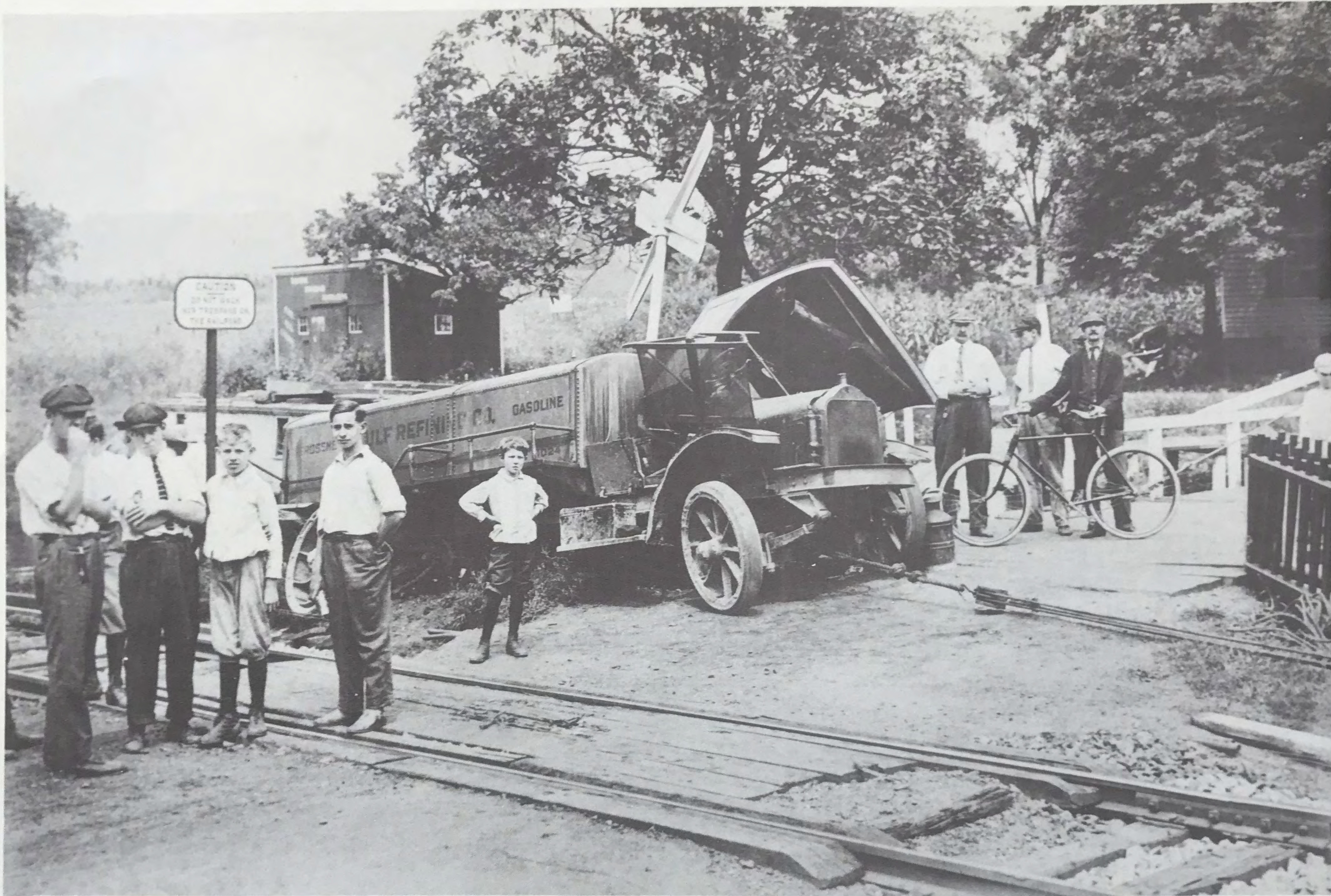
TUESDAY

WEDNESDAY

THURSDAY

FRIDAY

SATURDAY



A collision between a truck and a locomotive of the Belvidere-Delaware Line.
This 1916 accident occurred at the Church Road crossing, Titusville.



AUGUST

1987

SUNDAY

MONDAY

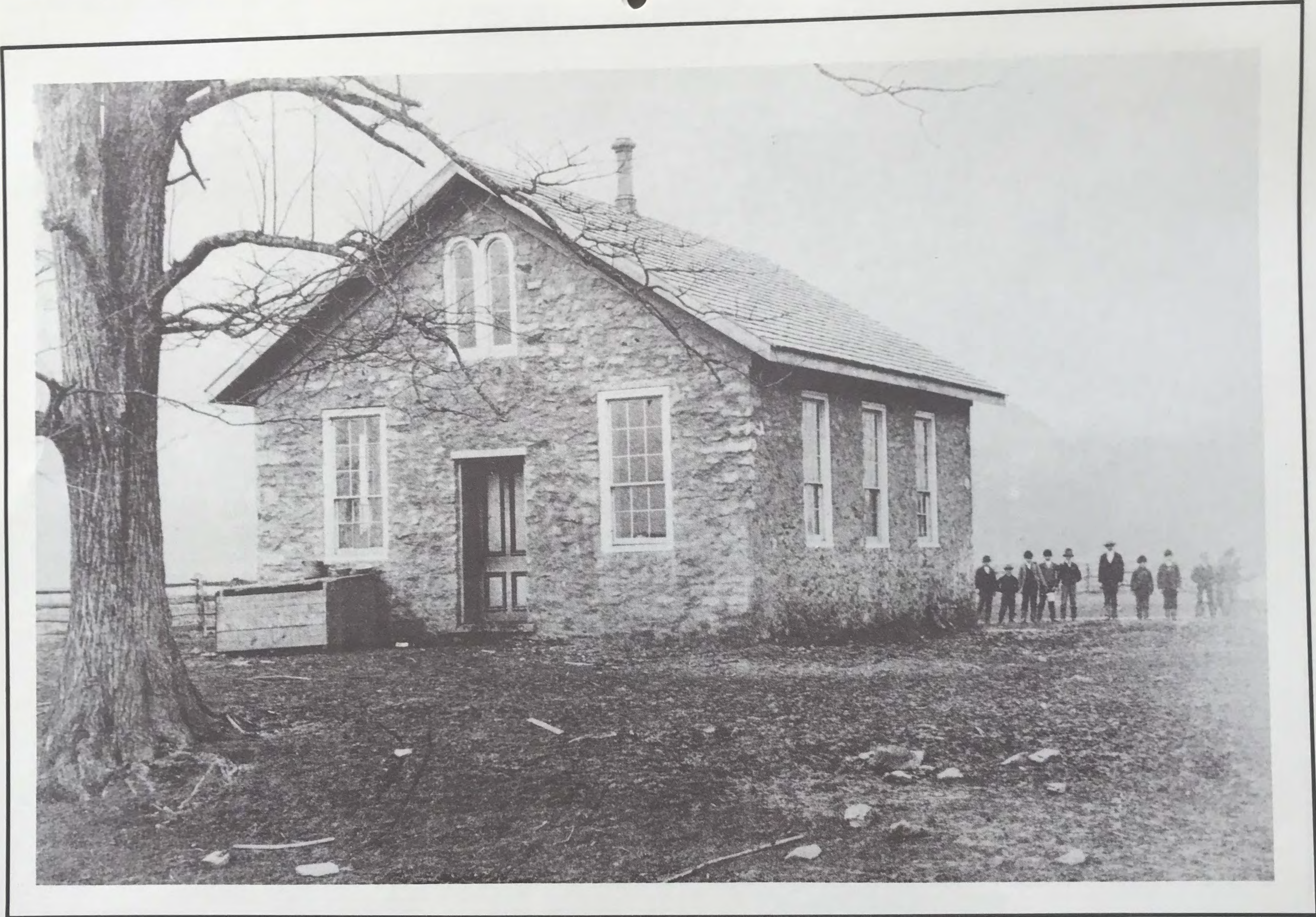
TUESDAY

WEDNESDAY

THURSDAY

FRIDAY

SATURDAY



The District #11 school house at Marshall's Corner was built in 1825.
It contained grades 1 through 7 only from the turn of the century until it's closing in 1935.



SEPTEMBER

1987

SUNDAY

MONDAY

TUESDAY

WEDNESDAY

THURSDAY

FRIDAY

SATURDAY



The Harbourton Store, circa 1912, was in use from 1837 until the mid 1960's. A Post Office was also located here for many years.



OCTOBER

1987

SUNDAY

MONDAY

TUESDAY

WEDNESDAY

THURSDAY

FRIDAY

SATURDAY



The faithful pose proudly before their meeting house constructed in 1822.
This 1876 photo shows the newly erected monument to John Hart, signer of the Declaration of Independence.



NOVEMBER

1987

SUNDAY

MONDAY

TUESDAY

WEDNESDAY

THURSDAY

FRIDAY

SATURDAY



Prior to the automobile, sleigh riding was popular during the snow season.
This turn of the century view shows 23 West Delaware Avenue, Pennington in the background.



DECEMBER

1987

SUNDAY

MONDAY

TUESDAY

WEDNESDAY

THURSDAY

FRIDAY

SATURDAY

THE PHOTOGRAPHS USED IN THIS CALENDAR
ARE FROM THE FOLLOWING SOURCES:

THE GEORGE H. FRISBIE COLLECTION
THE COLLECTION OF CHRISTOPHER BANNISTER
THE HOPEWELL MUSEUM
HOPEWELL TOWNSHIP HISTORIC SITES COMMITTEE
GEORGE HART
WAYNE CADWALLADER
HOPEWELL VALLEY HISTORICAL SOCIETY COLLECTION

OFFICERS

Caroline Woodward, President
John Grant, 1st Vice-President
Jean Koeppel, 2nd Vice-President
Marion Cervone, Secretary
Larry Cragle, Treasurer

BOARD OF TRUSTEES 1987

Pam Cain
Tina Campbell
Phyllis D'Autrechy
Betty Davis
Jerry Farina
Frank Henschel
Betty Hirschmann
Peter Maurer
Carol Meszaros
William Rogers

CALENDAR PROJECT COMMITTEE

Jack Koeppel, Chairman
Pam Cain
Phyllis D'Autrechy
Carol Meszaros
Bob Meszaros

TYPESETTING & PRINTING

TypeHouse of Pennington